



sponsored by:



2025 1 2025
SUFFOLK
CLOVERLEAF

5 to 8 August 2025



Rally ^{the} Globe
VINTAGE AND CLASSIC CAR CLUB



5 to 8 August 2025



Rally the Globe will be exploring a new part of the British Isles for our sixth Cloverleaf. Taking place in the mid-summer of 2025, our exclusive base will be the luxurious Kesgrave Hall set in 45 acres of beautiful Suffolk countryside.

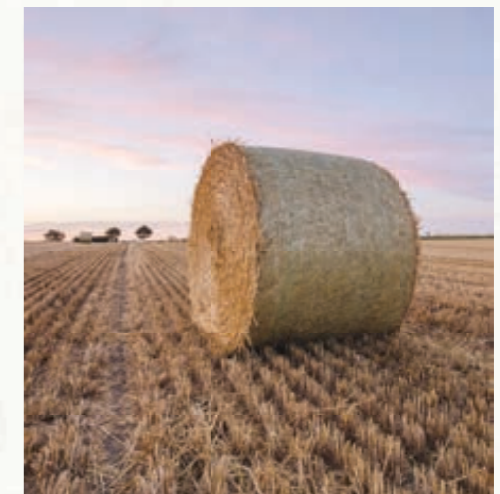
With a restricted number of entries available, the smaller group size provides us with the opportunity to dip into the lesser known delights hidden amongst the broads and fenlands of Norfolk and the landscapes of Suffolk and Essex which inspired John Constable's famous paintings. We will also explore some of the stunning coastlines and quaint villages that East Anglia has to offer.

The normal classic rallying experiences will be blended with some less formal fun and games, sampling the traditions, local food and drinks of the land of the ancient Angles and Saxons.

To request an entry form and secure your place, please go to www.rallytheglobe.com or email info@rallytheglobe.com



Kesgrave Hall



Photos: gerardbrown.co.uk, shutterstock.com and Kesgrave Hall



What makes a Cloverleaf special?

- ⊗ Exclusively for Members of *Rally the Globe*, with a limited number of entries available.
- ⊗ Three nights at a single luxury base in a special location with sole use of all the accommodation and facilities.
- ⊗ A late start on the first day and an early finish on the last day to allow you to make travel plans that work best for you.
- ⊗ Four days of team competition with the emphasis on fun, smiles and the unexpected, more than on the stopwatch.
- ⊗ Exclusive and personal experiences that are not normally possible with a larger rally group.
- ⊗ Great driving, great food & drink, and great friendships.





Eligible Cars: Cars of a specification produced before 31st December 1976. Please check with us if you are not sure if your car is eligible.

Eligible Crews: At least one person in each crew must be a full member of *Rally the Globe*. There are a maximum number of entries available on this event.

Competition: There will be a few short Regularity Sections each day on interesting but quiet minor roads. Special Tests will also take place throughout the event on private land. Some of these Tests will be traditional driving against the clock, others will involve different skills and a bit of luck.

In an attempt to keep the rivalry (relatively) light-hearted

and sociable, there will be no individual winners. Instead, the main competition will be between teams of three cars selected by the Organisers to provide a balance of performance, ability and experience.

Roads used: Some of the most scenic roads in the areas we use can be bumpy so low-slung cars may need to be driven with care, but we will avoid rough and potholed roads as much as possible. We are lucky to have been offered use of expansive areas of farmland, so some of the Tests and Regularities will include unsurfaced sections such as grass/stubble fields and dirt or gravel tracks.

Hospitality: The event will have a single luxury base in a special location with exclusive use of all

the accommodation and facilities. Accommodation for two people in a shared room (either double or twin) for three nights, and all meals are provided.

Navigation: The rally navigation will utilise a tulip Road Book with simple Regularities and Tests to start with, getting a little more complicated as the event progresses. Some sections will require straight-forward map reading using map extracts that will be provided in the Road Book. Other information will be issued along the way to keep things unpredictable!

Getting there and back: Regular ferry crossings to Harwich and Dover allow easy travel from Europe to the start and finish.

We hope you can join us!

For more information and latest news see: www.rallytheglobe.com

Details subject to change



Photos: gerardbrown.co.uk and shutterstock.com



Rally the Globe is a not-for-profit club that exists to support a broad family of motorsport enthusiasts who want to explore the world in vintage and classic vehicles. All our club's rallies come with the highly experienced support crew and safety cover including:

- Expert teams of sweep mechanics following the rally route to assist anyone they encounter, and to help you effect repairs at the end of the day
- Recommendations of experts in crew training and car preparation, shipping and insurance who can help ensure that you and your car arrive at the start line fully rally fit
- Advice, encouragement and assistance from our friendly and knowledgeable team both before the start and during the event.



Rally the Globe
VINTAGE AND CLASSIC CAR CLUB

www.rallytheglobe.com

+44 113 360 8961

info@rallytheglobe.com

Rally the Globe Limited, Airedale House,
Albion Street, Leeds LS1 5AP UK

sponsored by:



Sotheby's



kingfisher
Private Client